

Brother PE-design Plus.

PE-design Plus has many possibilities.

You can input a personal logo (JPG) and convert it to an embroidery file (PES). It is also possible to use the following files: .bmp, .tif, .png, .gif. However, it does not mean that they are all equally useful. You can enter various logos from your computer (don't forget to respect the designer's rights!).

There is also the possibility to paint them yourself (the same files as above are supported).

PE-Plus can convert all these images into embroidery files. There are several ways to do it.

PE-design Plus has a Wizzard that automatically converts an image file into an embroidery file. As soon as you activate PE-design Plus, the Wizzard immediately appears on the screen and the question appears: "How do you want to produce embroidery?"

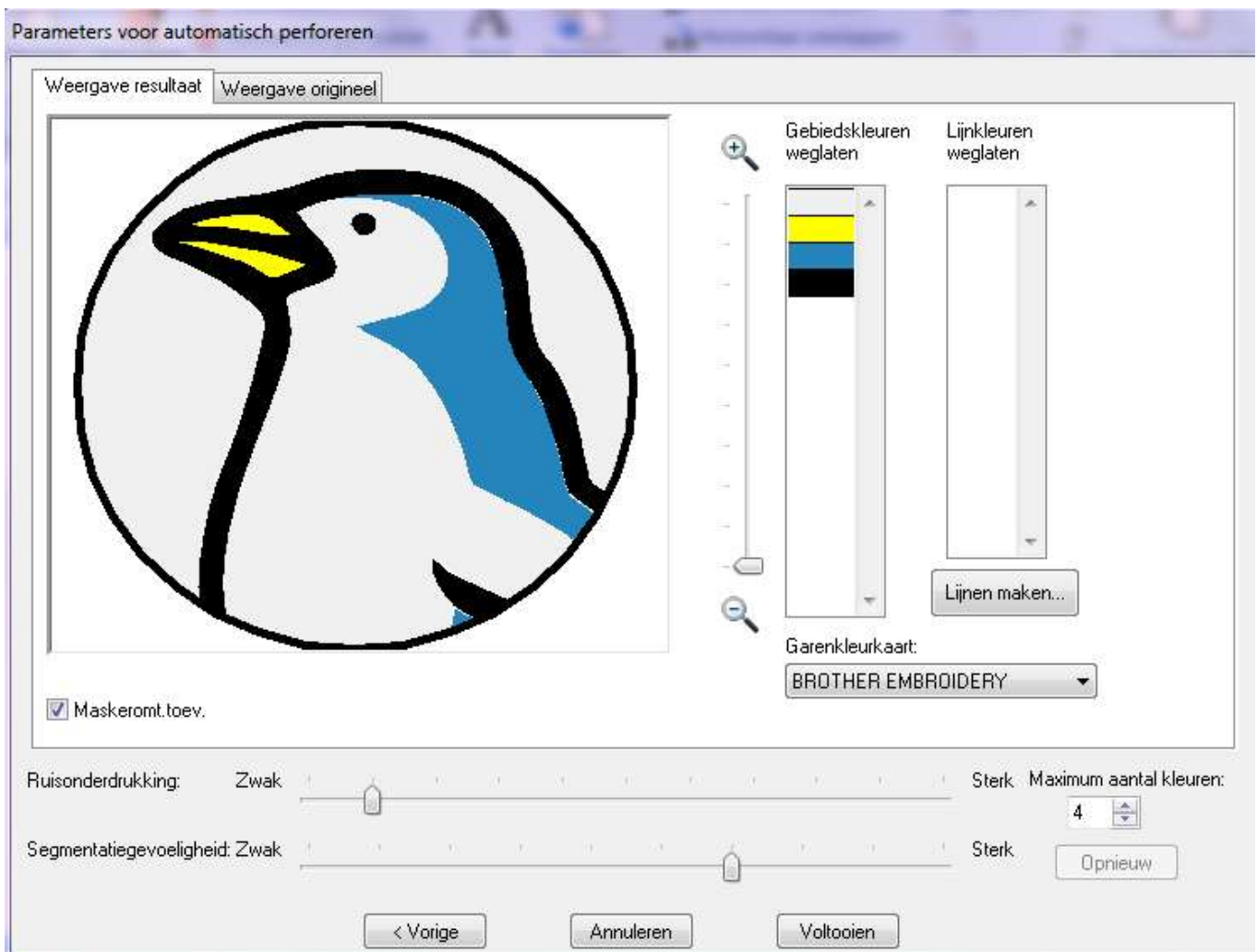
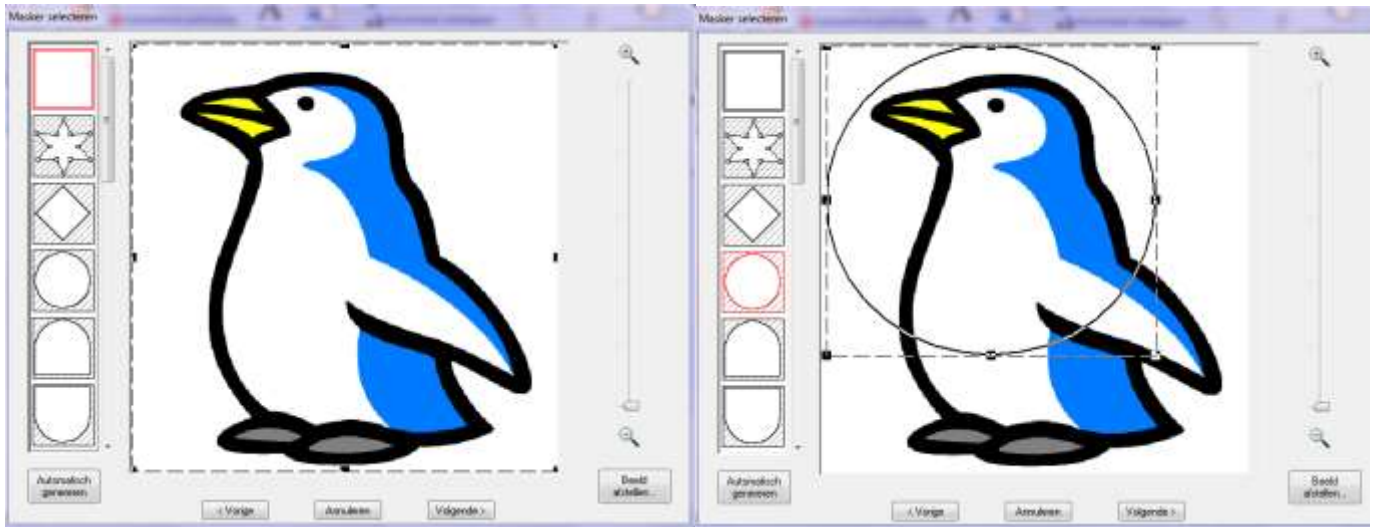


Then you can choose; open a new page to make an embroidery pattern (1), open an existing embroidery pattern, PES (2) or activate the Wizzard to convert an image into an embroidery pattern (3). In the last option (3) you can choose between 4 different embroidery patterns: photo stitch 1 (color, sepia, gray or mono), photo stitch 2 (color or mono), automatic punching and cross stitch (color, sepia or Gray). Look below.



The program helps you to go easily through the various steps.

Sometimes you have to choose between several options to form the design the way you want it. For example, you can cut out a part of an image and put a frame. That is called "a masker". The program has 16 maskers and a button to adapt the measurement to the drawing.



The program comes with an instruction manual. As soon as the image has been transformed into a drawing pattern, you can control it manually. Read more information in the "Extra information and explanation" section.

When the pattern is ready, you can transfer it to your Brother embroidery machine as follows:

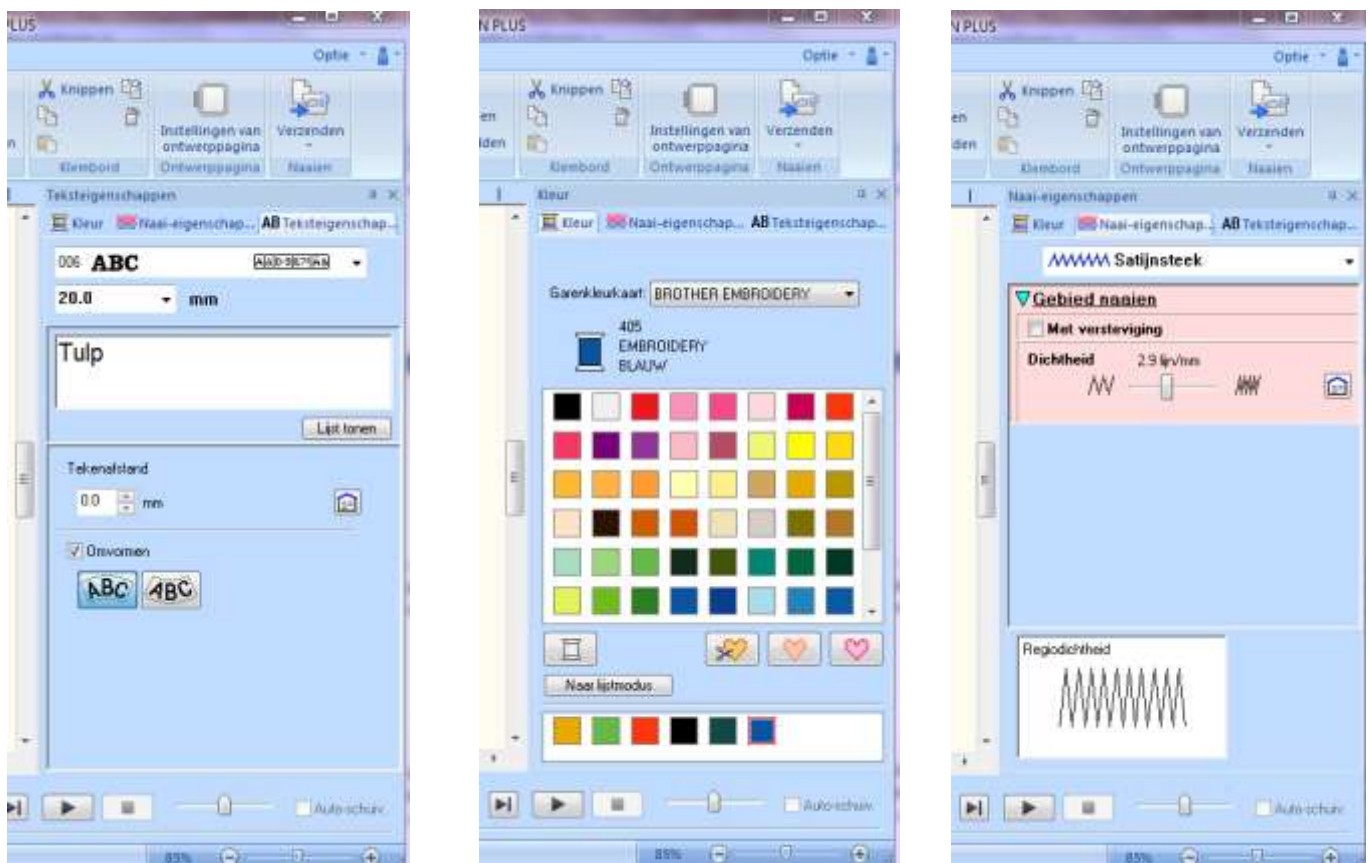
1. with an original card (that comes with the program)
2. with a USB.
3. Directly from the PC to the embroidery machine with a USB cable.

After that, the machine works exactly the same as with other embroidery patterns; the machine uses color1, as soon as it is ready, you change the thread and continue with color2, etc.

Information and extra explanation of PE-design Plus.

You can also use PE-design Plus to add texts to your images.

For this option you can choose from 35 varieties of fonts. After entering the text you can choose how you want to put the text, such as e.g. fan-shaped. You can also change the color and thickness of the letters. This is possible by opening the window "color" and "characteristics".



What kind of operations can I carry out with the PE-design Plus program?

With PE-design Plus you can perform many functions with the pattern, such as: move, enlarge, reduce, rotate, transform into a mirror effect, group, ...

Attention: embroidery patterns imported from an embroidery card cannot always make all these changes.

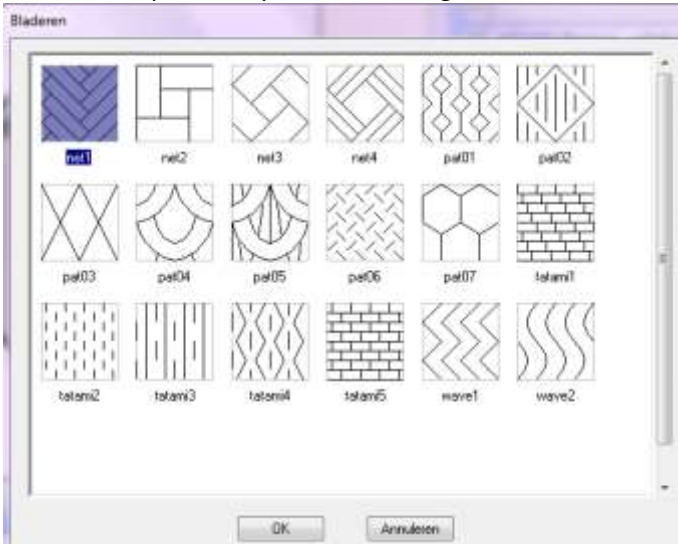
Check the embroidery motif.

It is very important to review a pattern before starting to embroider it. With the "visualization" function you can see how the final result will be. With the "stitch simulator" function you can follow exactly the order of your pattern embroidering and the time it will take.

The following things can be adjusted or changed:

1. Order of embroidery.
2. Characteristics of lines and areas of embroidery: font, stitch type, stitch direction and stitch density. All this influences the result of the embroidery.
3. Colors.

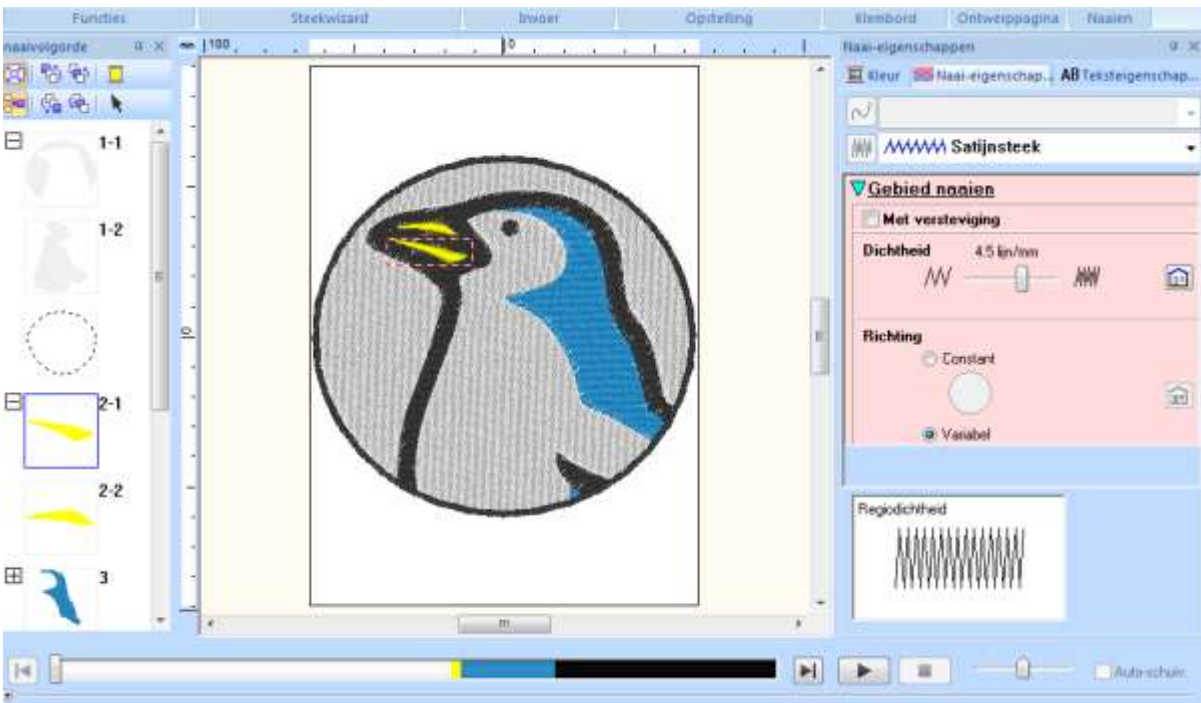
Example of the patterns for using fill stitches.



How can I improve my own embroidery pattern manually with PE-design Plus?

Open the PES pattern you want to improve.

Step 1: on the left of the pattern you will see "order of embroidery". Next to the colors you will see a straight cross in a square. Make 'click' on the cross and you will see the parts of a color (eg 1-2, 1-2, 1-3, etc. ; then 2-1, 2-2, 2-3, etc.). By 'clicking' on a part, it will be activated (marked with a broken red line).



Step 2: Now the chosen part is active in the embroidery pattern. To the right of the pattern you can see "embroidery features".

Here you can change a few settings (for the active part or more parts at the same time):

- **the type of stitch:** "satin stitch", "fill stitch" and "programmed fill stitch".

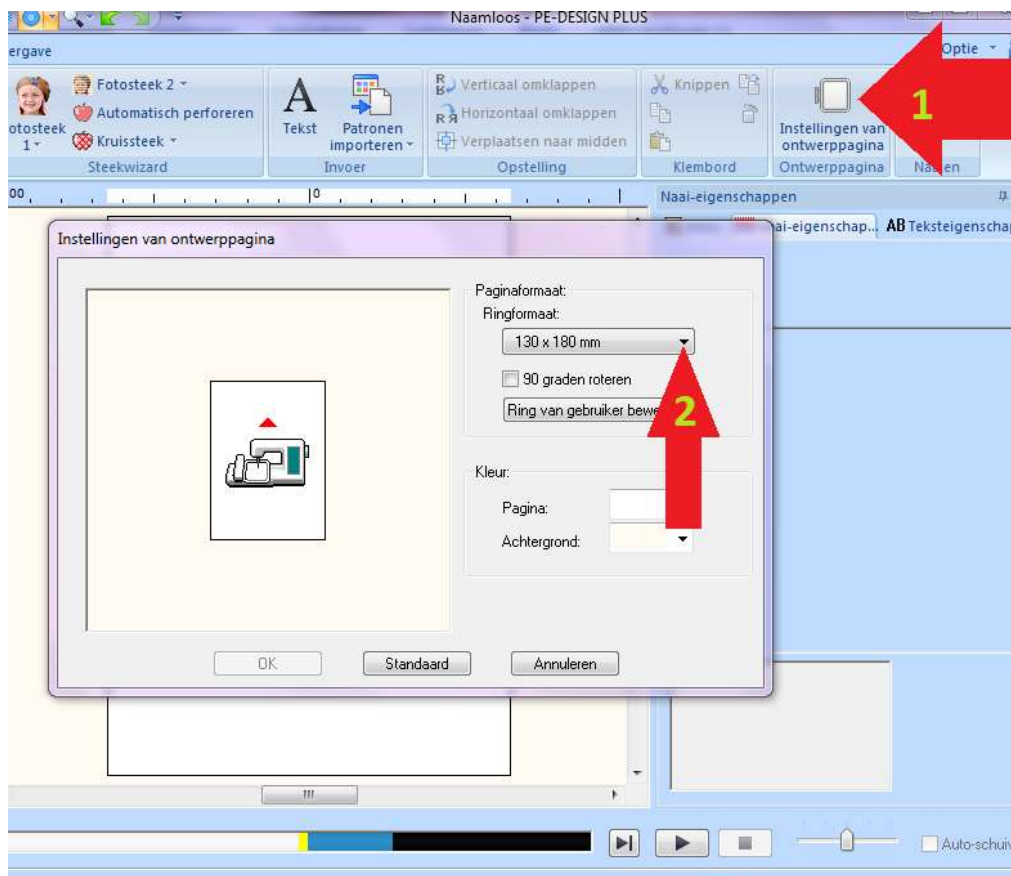
- **"with reinforcement":** It depends on the pattern you have to turn off or activate this function. In many cases it is not advisable to use the reinforcement, for example in small embroidery. When embroidering large pieces, the result is more beautiful with filling and avoids pulling on the fabric.

- the "stitch density" can be adapted: constant (you will have to choose a direction) or variable (the program chooses a direction adapted to the pattern). Outlines are usually prettier in satin stitch and a variable direction. It is recommended to embroider large areas with a fill stitch or the programmed fill stitch.

Repeat these two steps for each part of the embroidery.

After performing these steps for each part to be embroidered, you can adapt the order of embroidery. The drawing of a small eye in a large area can disappear if we embroider it first, however it will stand out when we choose to embroider it last. This is also the case for contour lines. The option to change the order can be found in the window to the left of the pattern.

Before starting to embroider the pattern, check the measurements of the embroidery ring. On the screen you can see "layout page settings" on the right. Make 'click' there and you can enter the format of the embroidery ring that you are going to use. During the embroidery you have to be aware if you are using the right embroidery ring. It is always possible to use a larger embroidery ring, but one that is too small can damage the embroidery ring and even the machine.



We hope you enjoy this program very much.
Team Matri.